



**FOOD INDUSTRY
MACHINERY**



WOOJAE INDUSTRY

- 2018 Participated in the SEOUL FOOD 2018 exhibition.
- 2017 Acquisition of 'INNOBIZ Company' certification
- 2016 Participated in the 2016 KOREAPACK exhibition
 - High speed soup pouch packing machines
 - Dispenser
 - Soup pouch loading machine (Jumbo box and small box)
- 2015 - Established company research development center
- ~2014 - Development of High-Speed soup pouch packing machine
 - * Possible to manufacture more than 900 pouch per min
- 2007 Extended business place: 180 Omok-Ro Bono-Dong Sangrok-Gu Ansan-Si, Gyeonggi-Do, KOREA
- 2005 - Selected of promising small business company (IBK Industrial bank of Korea)
 - Complete in localization of Cup filling and sealing packing line, soup pouch dispenser, pouch loading machine, independently.
- 2000 - Applied Utility model Registration Sorting equipment by wind power(remove debris filter in soup powder)
Electronic material removal equipment
- 1999 - Extended business place: Head Office and Main Factory 24-35 Yukgok-Dong Wonmi-Gu
~1998 Buchon-Si Gyeonggi-Do
 - Expanded business item (take over Changhwa INT'L : packing machine etc.)
- 1992 Acquisition of KSA9001 & ISO9001 Certification
- 1989 - Transformed to corporation entity
 - Official Name : WOOJAE Industry Co., Ltd.
 - Address : 24-35 Yukgok-Dong Wonmi-Gu Buchon-Si Gyeonggi-Do
 - Business scope : Drying Equipment, Ramen(Noodle)/Snack filling Machine & Logistics handling/ transportation Equipment



BUSINESS AREA

WOOJAE Industry divides the business areas into two categories to enhance professionalism and focus on the improvement in technology. Specifically, it is **the manufacture of the food processing industry machinery** to make the nutrition and cooking more convenient, extend the shelf life or manufacture food in a new form, and **the manufacture of automatic packaging machinery** to promote sales by ensuring the transportation, storage, distribution, safety, and value of food products. We make an effort to improve the technical aspects of the food industry as a whole.



ABOUT US

For the past four decades, WOOJAE Industry has been growing through many successful projects in partnership with the leading food companies based on our will to contribute to the development of the Korean food industry.

Our areas of business keep expanding across the food industry from the drying equipment necessary for foods such as snacks, bakery products, cereals, raw ingredients and agricultural and marine products to the preprocessing equipment for industrial use including mixers, cookers, etc., automatic packing equipment for containers, soup powders and vegetable flake (sachets) and other auxiliary equipment necessary for the industry.

Grounded on the abundant experiences and accumulated technology, WOOJAE Industry provides various services area from project review to design, production, installation, pilot operation and follow-up care. In addition, we undertake the facility improvement projects to improve the efficiency of an extensive range of production lines at the food manufacturing plants.

In this spirit, WOOJAE Industry continues to elevate the values of companies and customers through technological development and productivity enhancement based on change and innovation, and, even further, we will achieve a higher level of growth through forward-looking, sustainable management.

RESEARCH & DEVELOPMENT CENTER

Designing existing facilities to improve performance, testing to increase energy efficiency and productivity, etc. By using samples, check for ability of packaging, test to possibility of dryness and time required, capacity and propose the proper installation.



FOOD INDUSTRY & PROCESSING MACHINERY

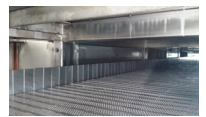
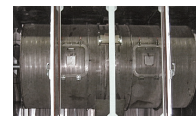
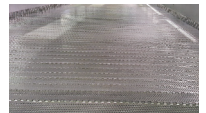
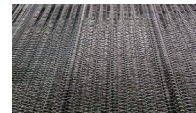
WOOJAE Industry designs and manufactures variety of drying equipment related to the base for manufacturing the ingredients for food, dried fish products, herbal decoction grounds or snacks and various preprocessing equipment for sauce production in consideration of productivity and efficiency. Other than the production of the drying machines, auxiliary equipment, cookers, mixers, Kneaders and cooling system, we provide partial-renovation projects at production lines and layout consulting services.

DRYER



Overview

- The inside of the dryer consists of the processes of blowing, circulating and discharging hot air in a closed chamber.
- The dried item is transported continuously for drying.
- Maximize drying efficiency by selecting various NET types.



Features

- The product is forcibly passed through hot air to mass-process and ensure high efficiency.
- Products that are susceptible to breakWage or scattering and those that have adhesive properties are acceptable.
- Easy configuration of temperature and wind speed circulation amount of hot air by zone according to the drying progresses.
- Convenience maintenance settings for maintenance and cleaning purposes.

Applicable Products



Hot Pepper



Carrot



Corn



Dried Anchovy



Dried Squid



Cereal



Compound feed

- Available to design and manufacture according to customer needs in consideration of input product, water content, discharge amount, time and temperature, etc.

Others



KNEADER



KN1000



Overview

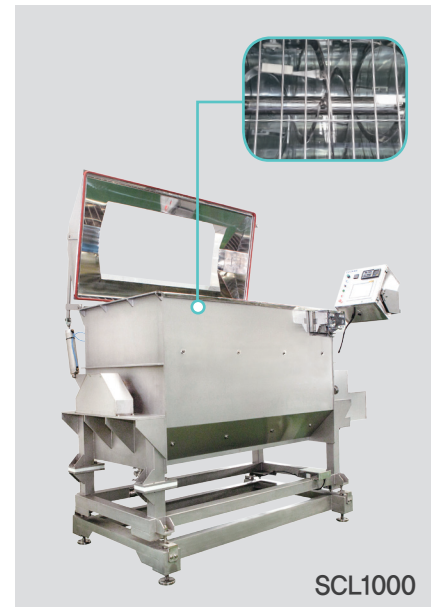
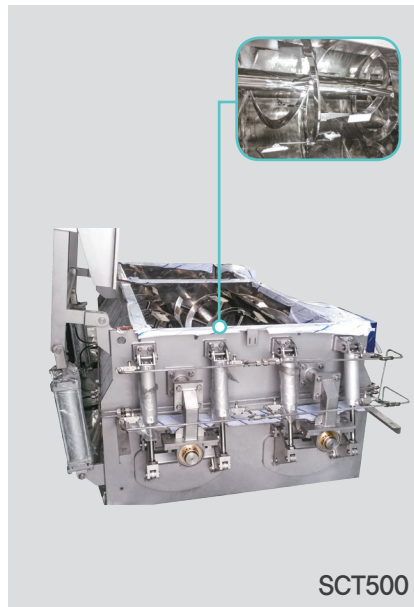
- Jacket structure type aligned to dynamic plane.
- Uniform heat conduction, minimized damage to the product, consistent food preparation.
- Useful for managing heat sources and maintenances through centralized control.
- Suitable for clean and hygienic work using stainless steel.
- Various options to choose the motion directions and types of impeller according to the properties and applications of the product.

Specification

Capacity	1000 L/hr	Heat source	Steam (Gas, heat-powered boiler can be selected)
Size	1200W X 3100L X 1700H	Options	Choose from estimation system, temperature sensor, timer, seal type
Steam	Steam: 2.0~3.0kg/cm ²		
Electricity	Inverter control, Control panel	Applicable Product	Various liquid sauces

※ Custom order is available as per customer requirements.

COOKER

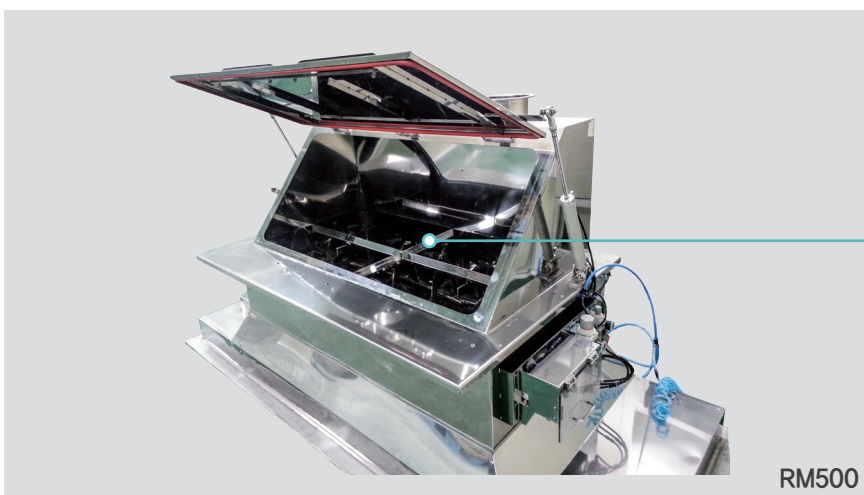


Overview

- Secondary processing equipment that stirs liquid in the liquid form at high temperature.
- Process by injecting the oil additive to the revolving blades (scraper) on the bottom surface and the upper head part.
- Keep the scraper and the bottom surface of the pot at a certain distance to prevent carbide on the bottom of the pot.
- Recommended for stirring liquid products as it uses screw impeller.
- Heat source: Gas burner (DFC500), Steam (SCT500, SCL1000)

※ Custom order is available as per customer requirements.

MIXER



Overview

- Blends various kinds of powder products together with liquid source or others,
- Also available as a cooling mixer as it is installed with a jacket type.
- Suitable for clean and hygienic work using stainless steel.

※ Custom order is available as per customer requirements.

Specification

Capacity	300L, 500L, 1000L
Dimension	1640W X 2800L X 1450H
Applicable Product	Powder soup, Vegetable Sachet

AUTOMATION PACKING MACHINERY

Automatic packaging machines can be divided into automatic and manual machines according to the supply method of packing materials and the target product to be packed. They are divided into general purpose, combined use, and dedicated facilities depending on the range of products. WOOJAE Industry mainly designs and makes packaging equipment related to the noodle production process of the food industry according to the situation in the field. Mainly, we make and install the automatic container packaging equipment (CFM), high-speed packaging equipment for powder and vegetables flake (sachets), sorting device for automatic supply of packaged soup powders, and soup pouch input devices.

CFM (Cup Filling & Sealing Machine)



Overview

- Automatically feeds, packs, seals, and releases products into various containers.
- Automatically feeds containers, products and additives into retainers that are intermittently driven by the pitch conveyor system.
- Available to select either the LID or film type after checking the feed status of the product and their weight.
- Release by sealing after confirming the status of the product.
- Minimize the release of defective products through monitoring and security function of the entire process.
- Maximize CFM performance with sophisticated safety sensors.

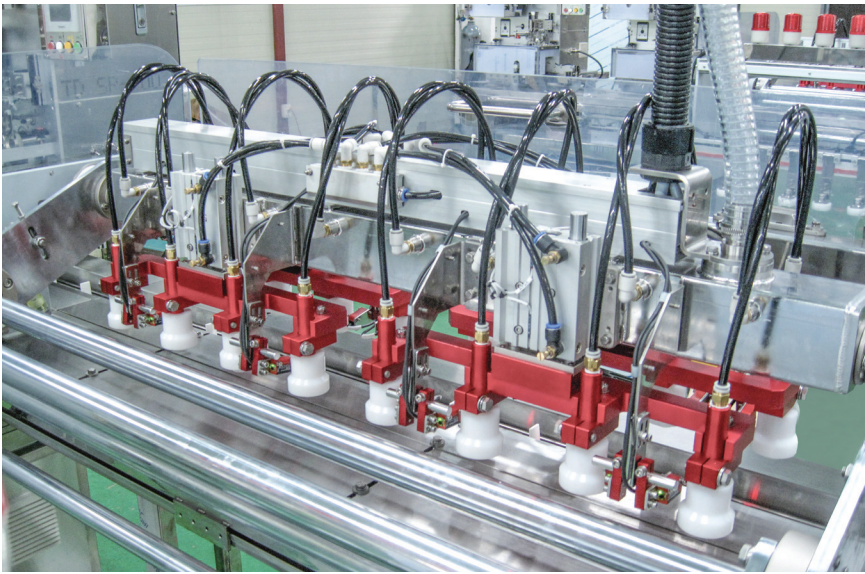
Specification

- The production volume is classified by the number of containers to feed and the number of operating revolutions.
- Container rows can be selected from 2 to 4, 8, 10 and 12.
Example) General production capacity: 240 cups/min of 30 cycle with 8-row container.



Container package products
e.g. ramen, snack, confectionery, cereal, etc.

LOADING MACHINE



Overview

- Feed pouch package products that are cut and supplied from a distributing machine into containers.
- No blockage in vacuum pads. Adopts a suction type.
- Direct feed into the container regardless of the size of the pouch.
- Two cylinders at the head ensure stable operation.

Applicable Products



Soup Broth



Noodle Type



POUCH FEEDER

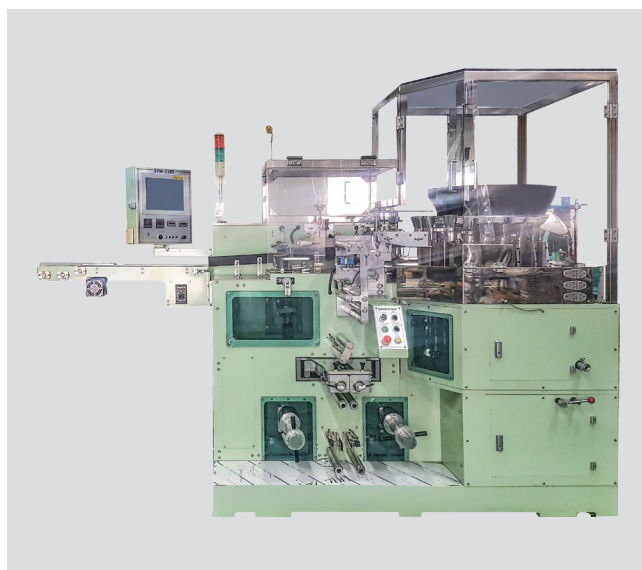
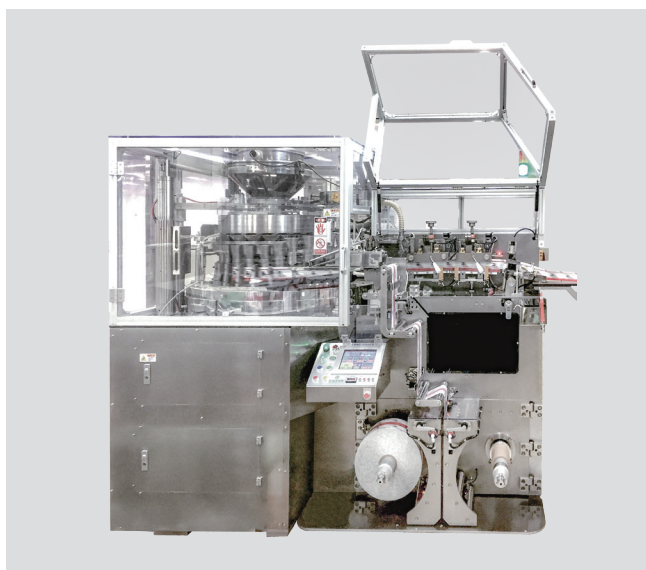


Overview

- Automatically feed the products in a retort pouch to a distributing machine.
- Detect any abnormality in the products such as twist, cut, etc. in the soup pouch(sachets) during auto feeding.
- Applicable to various kinds of products.
- Available for belt type and roller type; can be selected according to the characteristics of the product.

* Soup pouch (sachets) in the liquid, powder, or dehydrated vegetable form contained in a retort pouch.

SOUP POUCH PACKING MACHINE



Overview

- Fills a small amount of powder or dehydrated vegetables into a retort form (attached in rows with one after another).
- Available for high-speed mass production with 3-sided sealing.
- Minimized quantitative error rate by rotary drum method and volumetric method.
- Production capacity with up to 950 pouches per minute.

Specification

Film width	160~220mm	Power	220V, 3P, 60Hz, 6.2~7.2Kw/hr
Film diameter	360~400mm, 3"BOBIN		
Film speed	50~72Mr/min	Packaging material	PET/AL/PE, PET/ Deposition /PE, OPP/AL/PE
Weight	5g~25g		

Applicable Products



Soup powder



Vegetable sachet



Desiccant



Coffee



tablet, various kinds of powdered tea, seasoning, etc.



SOUP POUCH DISPENSER



Overview

- Available to cut out and feed even the packed forks or foldable spoons.
- Supply or put the products packed in a retort pouch (e.g., soup powder, liquid, dehydrated vegetables) into a separate packaging material by cutting them out.
- Available to cut out and feed even the packed forks or foldable spoons.

※ Production speed may vary depending on the product length and physical properties.



< Sample >

- Liquid / powdered soup pouch
- Dehydrated vegetable sachets pouch
- Packed fork
- Packed folderble spoon

SOUP POUCH ARRANGING MACHINE



Overview

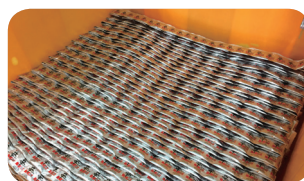
- Arrange and load(row upon row) the soup packed in a pouch inside the jumbo box OR small box without entangling.
- Facilitate the production process when loading, transporting and supplying the packed soup powders.

Specification

Specifications	JUMBOBOX TYPE(Loader) (L1100 X W1100 X H775)	SMALL BOX TYPE(Layer) (L685 X W485 X H415)
Pouch Pitch:	L80-95mm	90 pitch
Maximum speed	Approx. 1,000 pouches/min	Approx. 300 pouches/min
Power	220V, 60Hz, 3-phase	220V, 3P, 60Hz, 1.5 Kw/hr
Power consumption	Approx. 4.1Kw	

※ May vary from product dimensions, sort quantity, product type, and box size.

Sample Figure

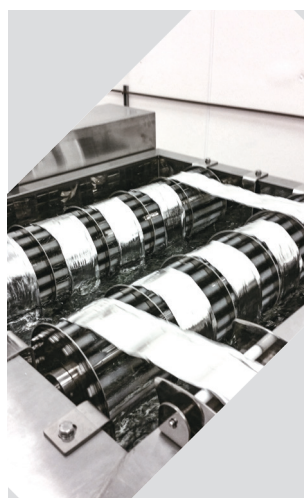


Jumbo Box



Small Box

LIQUID SOUP POUCH COOLING MACHINE



Specification

Capacity	20-25m/min
Power	3-phase 220V, 60Hz
Drain pump	1.5 Kw
Blower motor	1.3 Kw
Available package type	3 or 4 sided soft retort pouch packaging Example: (Vertical sealing: 8mm, crossing patterns: 0.8mm) or (Horizontal sealing: 10mm, crossing patterns: 0.8mm)

Overview

- Maintain the specified temperature of the liquid product packed at a high temperature.
Note) From the package temperature of the product (85 - 75°C) to the set temperature (35 - 30°C).
- The used coolant can be circulated to be reused.

※ Custom order is available as per product temperature and production volume.

OTHER EQUIPMENT

VERTICAL LIFTER



Overview

- Box transfer equipment capable of continuous upward/downward vertical movements.
- Available to transfer various types of boxes.
- Transfer and discharge in multiple stages.

Specification

Capacity	18~20 BOXES/min
Electricity	3.5 Kw
Air	0.1m ² /min
Temperature	0~40°C
Applicable Product	Box packages

SORTING MACHINE



Overview

- Applied with the cyclone principle to sort out foreign matters.
- Sort out and remove impurities mixed in the product by resorting to a gravity difference in particles.

Specification

Capacity	200kg/hr (Based on dry weight: specific gravity 0.0612)
Electricity	200V 60Hz 3Ph
Air	5kg/cm ²

Sortable item

- Heavy impurities: Stone, iron, plastic pieces and others.
- Lightweight impurities: Hair, thread, paper, vinyl, and other lightweight objects.

PARCHING MACHINE



Overview

- Use a burner (LNG) to heat the salt and have it inflated for the production.
- Simple cylindrical (drum) structure ensures good durability and easy maintenance.

Specification

Salt dosage	30kg * 17 sacks = 510g	Exhaust temperature	170°
Passage time	20 sec	Dimension	4700W X 1820L X 2600H
Room temperature	360°	Production volume	800kg/hr
Salt temperature	220°	Main power	220V 60Hz 3ph

※ Custom order is available as per customer requirements.

WOOJAE INDUSTRY CO., LTD.

경기도 안산시 상록구 본오 2동 731-3(오목로 180)
731-3, Bono 2-dong, Sangrok-gu, Ansan-si, Gyeonggi-do, Korea

TEL +82-31-419-4351 FAX +82-31-419-0248 www.woojae.co.kr